

Volunteering in Sunderland Children's Centres



Volunteering in Sunderland Children's Centres

What does volunteering involve?

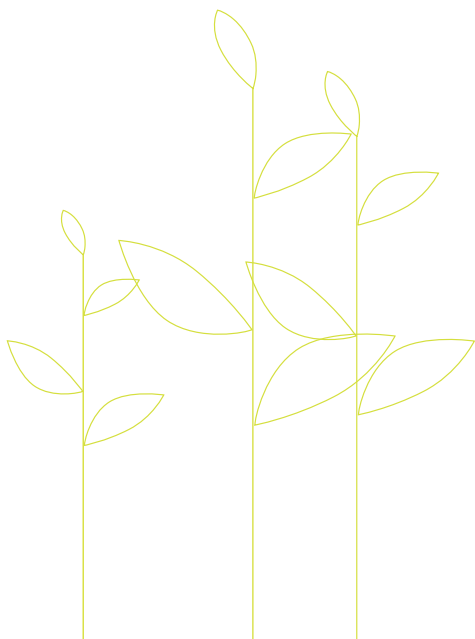
It is an opportunity for parents and carers to help with the planning and delivery of services at Sunderland Children's Centres. The aim of the Centres is to give children in the city the best possible start in life. They offer activities for children plus parents/carers, including help and support with the practical issues of bringing up a family.

The range of volunteering openings includes:

- Play and learning activities e.g. Messy Play, Time for Rhyme and Toy Library
- Community Parenting - helping parents/carers talk through their difficulties
- Parents' Groups – chance to be a parent representative
- Health sessions e.g. Baby Days, Bosom Buddies (breastfeeding support group) and Smoking Cessation
- Community driving
- General office duties and publicity, including mailshots

What can it offer you?

- You can volunteer to help with a wide range of activities and events
- You can learn new skills and gain qualifications through training courses
- It will provide you with work-based experience, which could help you gain employment and make a valuable contribution to your family and the community



What are the benefits for you and your child?

- You will meet other new parents/carers and build new relationships
- You will be supported with a range of training opportunities and will receive a full induction package
- Expenses are paid for travel and childcare
- You can influence the decision-making in the delivery of Sunderland Children's Centre services

To find out more about becoming a Sunderland Children's Centre volunteer please contact your local centre – details overleaf.



Where to find your local Sunderland Children's Centre

Sunderland Children's Centre Thorney Close

Thorney Close Action and Enterprise Centre
Tel: 0191 553 4127

Sunderland Children's Centres Washington

Rainbow Family Centre, Concord
Tel: 0191 219 3995
Wessington Primary School, Glebe Village
Tel: 0191 219 3720
Oxclose Primary and Nursery Schools
Tel: 0191 219 2995

Sunderland Children's Centre Austin House

Austin House Family Centre, Southwick
Tel: 0191 566 2650

Sunderland Children's Centre Bunny Hill

Sunderland Customer Service Centre
Tel: 0191 561 8126

Sunderland Children's Centre Monument

Barnwell Primary School, Penshaw
Tel: 0191 553 6576
Dubmire Primary School, Houghton
Tel: 0191 382 3071

Sunderland Children's Centre Highfield

Highfield Community Primary School,
Ford Estate
Tel: 0191 561 2050

Children's Services

The Sandhill Centre
Grindon Lane
Sunderland
SR3 4EN

Tel: 0191 520 5505

Fax: 0191 553 8886

Minicom: 0191 525 0075

Email: cis@sunderland.gov.uk

Sunderland Children's Centre Pennywell and South Hylton

Pennywell Early Years Centre
Tel: 0191 553 6820

Sunderland Children's Centre New Silksworth

New Silksworth Infant School
Tel: 0191 553 6190

Sunderland Children's Centre Hendon

Valley Road Community Primary School
Tel: 0191 553 7750
Hudson Road Primary School
Tel: 0191 553 7675

Sunderland Children's Centre Ryhope

Ryhope Infant School
Tel: 0191 553 6206

Sunderland Children's Centre Hetton

Hetton House, Park View
Tel: 0191 520 9200

Sunderland Children's Centre Houghton

Houghton Community Nursery School
Tel: 0191 553 6557

Sunderland Children's Centre Millfield

Millfield Community Nursery School
Tel: 0191 553 2775
Diamond Hall Infants School
Tel: 0191 553 7620

Sunderland Children's Centre Grangetown

Grangetown Primary School
Tel: 0191 553 7650

Sunderland Children's Centre St Peter's

Dame Dorothy Primary School
Tel: 0191 553 7618

This information can be made available in large print, Braille, audio and other languages. Please contact the Children's Information Service on 0191 520 5505 or email cis@sunderland.gov.uk for help.

All information correct at time of going to press.
Published January 2008.

As part of Sunderland's commitment to a balanced and sustainable future this leaflet is printed on paper made from 100% recycled post consumer waste. Please recycle it again after use by putting it in your Kerb-it box or your paper bank.